

## E<sup>3</sup> Drop-In Current Transformer, size 1-3, suitable for calibration f or E<sup>3</sup> NH Fuse-Switches, size 1-3

The E<sup>3</sup> current transformers of accuracy class 0.5s for size 1 – 3 further extend the range of E<sup>3</sup> products for smart power management. They are suitable for calibration and approved by the Physikalisch-Technische Bundesanstalt (PTB) for accounting purposes in Germany.



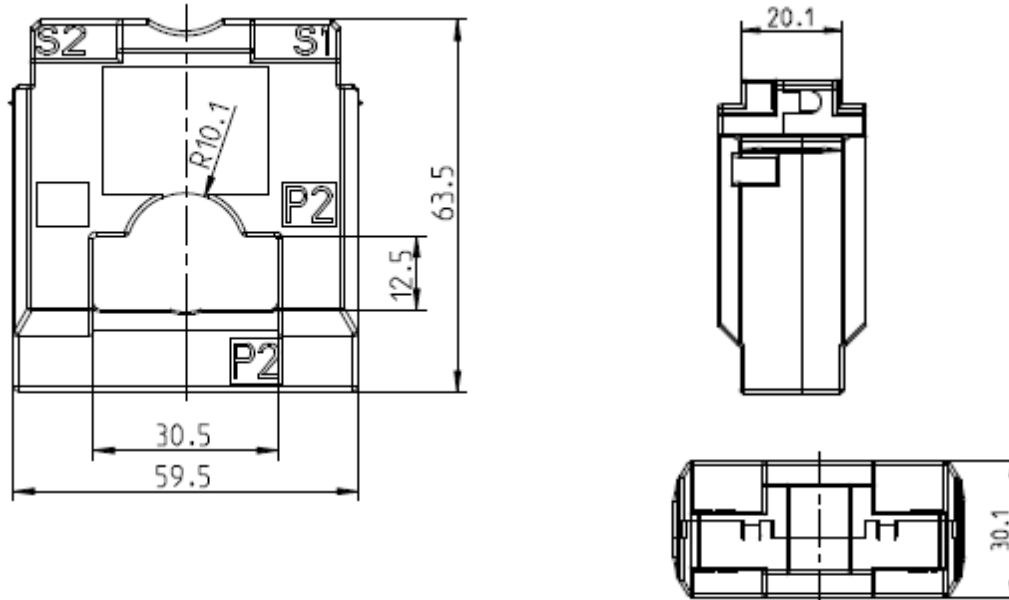
- **Simple retrofitting:** The simple installation inside the component envelope allows E<sup>3</sup> NH fuse-switches already installed in the system to be upgraded very easily.
- **Quick installation:** Thanks to the drop-in system, simply pushing the transformer onto the feed terminals is enough to secure it to the fuse-switch. The wiring routing on the rear can be optimised by optional wiring brackets.
- **Face-side data label:** Each E<sup>3</sup> transformer is provided with 2 labels so that the transformer's data is visible when the device is installed.

The drop-in transformers are suitable for calibration and approved by the Physikalisch-Technische Bundesanstalt (PTB) for accounting purposes in Germany.

E <sup>3</sup> drop-in current transformer, size 1 – 3, suitable for calibration, with pre-assembled connection cables of 3 meters, for E <sup>3</sup> NH fuse-switches, size 1 – 3						
Description	Transformation ratio	VA-Power	Class	Order-No.	PU	PG
E_E <sup>3</sup> W1-3 250/5A 2,5VA Kl.0,5	250/5	2,5	0,5	77550-1732	1	E <sup>3</sup> Zub.
E_E <sup>3</sup> W1-3 300/5A 2,5VA Kl.0,5s	300/5	2,5	0,5s	77550-1836		
E_E <sup>3</sup> W1-3 400/5A 5VA Kl.0,5s	400/5	5,0	0,5s	77550-1946		
E_E <sup>3</sup> W1-3 600/5A 5VA Kl.0,5s	600/5	5,0	0,5s	77550-2146		
E_E <sup>3</sup> W1-3 800/5A 5VA Kl.0,5s	800/5	5,0	0,5s	77550-2346		
Kabelhalter E <sup>3</sup> Gr. 1-3				36382-0010		

Sales launch:	Delivery time:	Documentation
Available	Ex stock, subject prior to sale	Product information 024, Gross price information

## Dimension drawings



## Technical data

Description	Unit	Value
Technical data according to VDE 0414 T44-1/ IEC/EN 60044-1		
Primary rated current I <sub>1N</sub>	A	See current transformer
Secondary rated current I <sub>N2</sub>	A	See current transformer
Rated frequency	Hz	50
Rated power frequency withstand voltage	kV	0.72 / 3.00
Rated continuous thermal current	A	1.2 x I <sub>n</sub>
Rated short-time thermal current I <sub>th</sub>		60 x I <sub>n</sub> ; max. 50 kA
Permissible ambient temperature	°C	- 5 to + 40
Extended current range		120%
Class of insulation in accordance with IEC 60085		E
Terminal connection		
Secondary terminal connection	mm <sup>2</sup>	2.5 - 4
Secondary terminal tightening torque	Nm	0.8