

# DATA SHEET: TEMBREAK 2 PVS400-NDL FOR USE ABOVE 250V DC

MCCB Electrical Characteristics to IEC 60947-2, EN60947-2, JIS C 8201-2-1 ANN. 1

| Frame reference                       | Quantity   | Unit   | Condition  | TB2 H/L 400                |
|---------------------------------------|------------|--------|--|----------------------------|
| Max In (A) of Frame                   |            |        |  | 400                        |
| Model                                 |            |        |  | PVS400                     |
| Number of Poles                       |            |        |  | 3 (4)                      |
| Type                                  |            |        |  | NDL                        |
| Nominal current ratings               |            |        |  |                            |
|                                       | $I_n$      | (A)    | 50°C   | 250,400                    |
| Electrical characteristics            |            |        |  |                            |
| Rated insulation voltage              | $U_i$      | (V)    | AC 50/60 Hz  | 800 (1150)                 |
| Rated impulse voltage                 | $U_{imp}$  | (kV)   |  | 8                          |
| Ultimate breaking capacity (IEC, JIS) | $I_{cu}$   | (kA)   | 1000V DC①②<br>750V DC①②<br>600V DC①②<br>500V DC①②<br>350V DC①② | -<br>10<br>-<br>-<br>-     |
| Service breaking capacity (IEC, JIS)  | $I_{cs}$   | (kA)   | 1000V DC①②<br>750V DC①②<br>600V DC①②<br>500V DC①②<br>350V DC①② | -<br>5 (10)<br>-<br>-<br>- |
| Protection                            |            |        |  |                            |
| Fixed thermal, fixed magnetic         |            |        |  | ■                          |
| Adjustable thermal, fixed magnetic    |            |        |  |                            |
| Magnetic trip only (adjustable)       |            |        |  |                            |
| Installation                          |            |        |  |                            |
| Front connection (FC)                 |            |        |  | ■                          |
| Extension bar (FB)                    |            |        |  | •                          |
| Rear connection (RC)                  |            |        |  | •                          |
| Plug-in (PM)                          |            |        |  | -                          |
| DIN rail mounting (DA)                |            |        |  | -                          |
| Dimensions                            | height     | (mm)   | 3 pole   | 260                        |
|                                       | width      | (mm)   | 4 pole   | 140                        |
|                                       |            |        |  | 185                        |
|                                       | depth      | (mm)   |  | 103                        |
| Weight                                | weight     | (kg)   | 3 pole   | 4.2                        |
|                                       |            |        | 4 pole   | 5.6                        |
| Operation                             |            |        |  |                            |
| Direct Opening Action                 |            |        |  | ■                          |
| Toggle operation                      |            |        |  | ■                          |
| Breaker mounted (HB)                  |            |        |  | •                          |
| Door mounted (HS)                     |            |        |  | •                          |
| Motor operation                       |            |        |  | •                          |
| Endurance                             | Electrical | cycles | 1000V DC<br>750V DC  | -<br>1,000                 |
|                                       | Mechanical | cycles | 350 - 600V DC<br>-   | -<br>4,000                 |

① Connect all poles in series when over DC250V

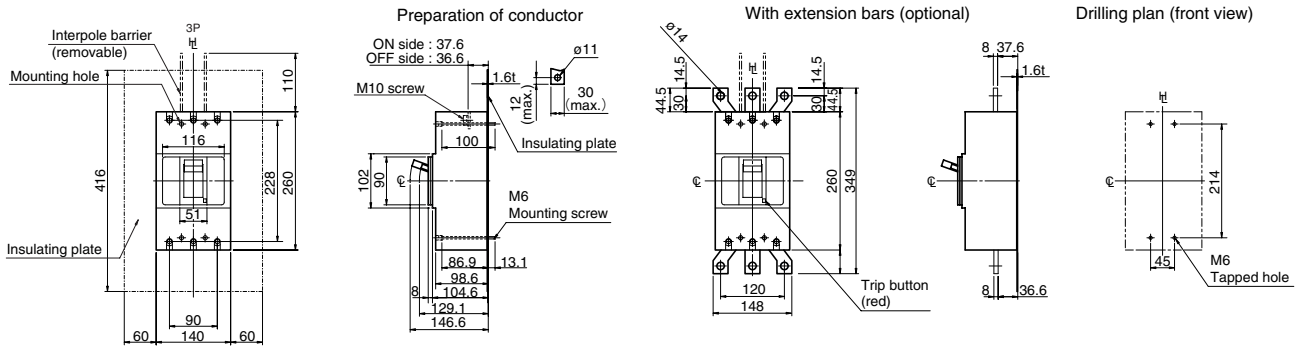
② The time constant (L/R) of the circuit should be less than 2.0ms nearby rated current less than 5ms for short circuit < 10kA less than 10ms for short circuit < 20kA less than 15ms for short circuit > 20kA

# DATA SHEET: TEMBREAK 2 PVS400-NDL FOR USE ABOVE 250V DC

## Outline Dimensions PVS400-NDL

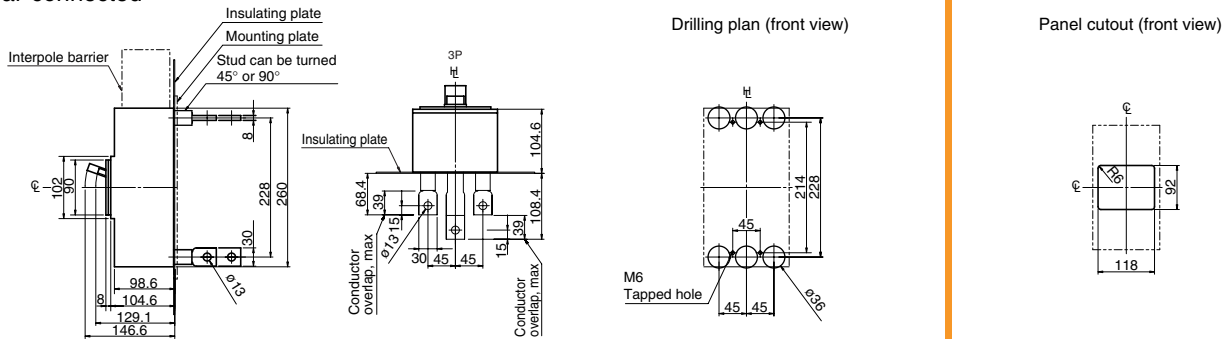
ASL: Arrangement Standard Line Ht: Handle Frame Centre Line

### Front-connected



Note: See section 4 for the installation of the insulating plate.

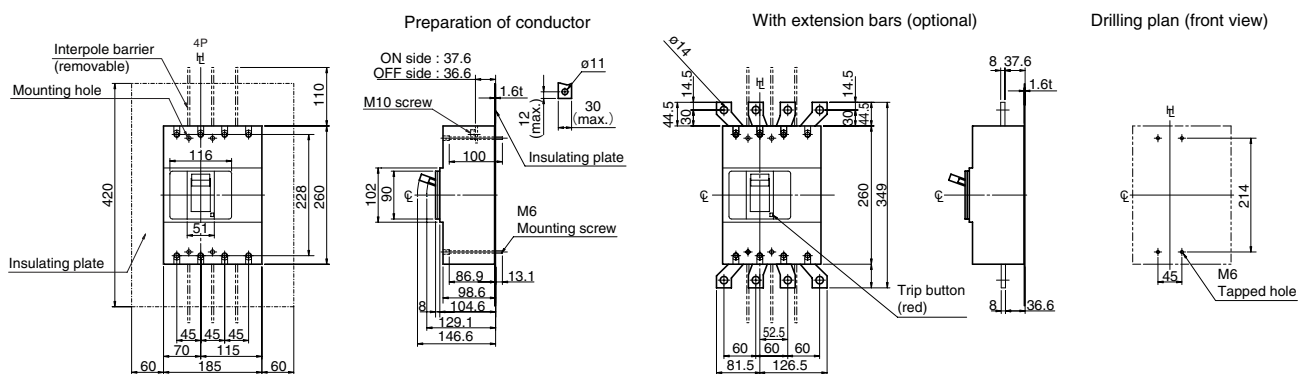
### Rear-connected



Note: Studs are factory installed in horizontal direction both on the line and load sides. See section 4 for the installation of the insulating plate.

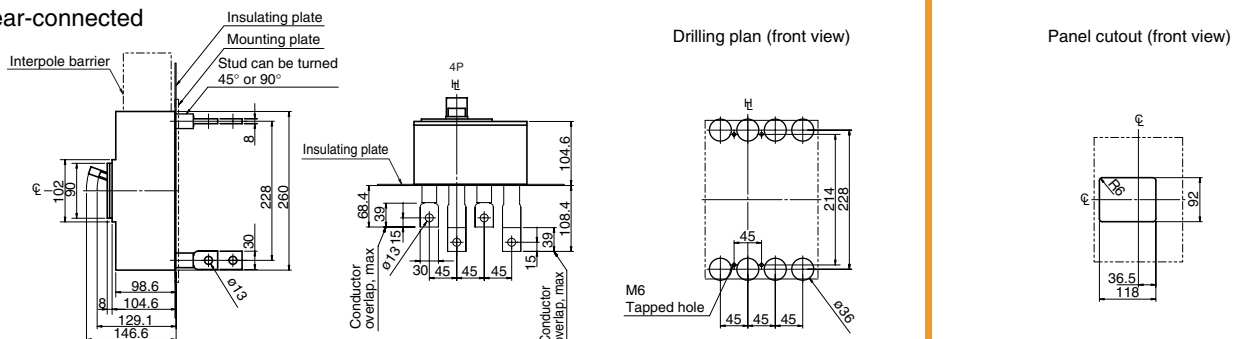
Panel cutout dimensions shown give an allowance of 1.0mm around the handle escutcheon.

### Front-connected



Note: See section 4 for the installation of the insulating plate.

### Rear-connected

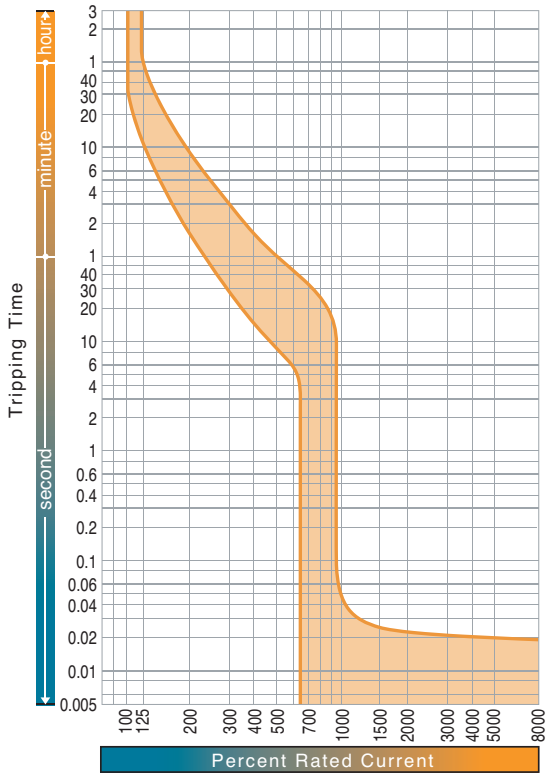


Note: Studs are factory installed in horizontal direction both on the line and load sides. See section 4 for the installation of the insulating plate.

Panel cutout dimensions shown give an allowance of 1.0mm around the handle escutcheon.

# DATA SHEET: TEMBREAK 2 PVS400-NDL FOR USE ABOVE 250V DC

Time/Current Characteristic Curves  
PVS400-NDL 3P



Time/Current Characteristic Curves  
PVS400-NDL 4P

