

DATA SHEET: TEMBREAK 2 PVS400-NDH MCCB FOR USE ABOVE 250V DC

MCCB Electrical Characteristics to IEC 60947-2, EN 60947-2, JIS C 8201-2-1 ANN.1,

Frame reference	Quantity	Unit	Condition	TB2 H/L 400
Max In (A) of Frame				400
Model				PVS400
Number of Poles				3 (4)
Type				NDH
Nominal current ratings				
	I_n	(A)	50°C	250,400
Electrical characteristics				
Rated insulation voltage	U_i	(V)	AC 50/60 Hz	(1150)
Rated impulse voltage	U_{imp}	(kV)		8
Ultimate breaking capacity (IEC, JIS)	I_{cu}	(kA)	1000V DC①② 750V DC①② 600V DC①② 500V DC①② 350V DC①②	5 - - - -
Service breaking capacity (IEC, JIS)	I_{cs}	(kA)	1000V DC①② 750V DC①② 600V DC①② 500V DC①② 350V DC①②	5 - - - -
Protection				
Fixed thermal, fixed magnetic				■
Adjustable thermal, fixed magnetic				
Magnetic trip only (adjustable)				
Installation				
Front connection (FC)				■
Extension bar (FB)				•
Rear connection (RC)				•
Plug-in (PM)				-
DIN rail mounting (DA)				-
Dimensions	height	(mm)	3 pole	260
	width	(mm)	4 pole	-
	depth	(mm)		185
	weight	(kg)	3 pole	103
			4 pole	-
Weight				5.6
Operation				
Direct Opening Action				■
Toggle operation				■
Breaker mounted (HB)				•
Door mounted (HS)				•
Motor operation				•
Endurance	Electrical	cycles	1000V DC 750V DC	- 1,000
	Mechanical	cycles	350 - 600V DC -	- 4,000

① Connect all poles in series.

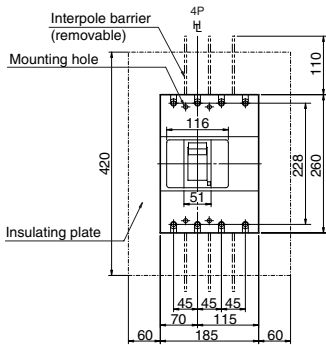
② The time constant (L/R) of the circuit should be less than 2.0ms nearby rated current less than 5ms for short circuit < 10kA less than 10ms for short circuit < 20kA less than 15ms for short circuit > 20kA

DATA SHEET: TEMBREAK 2 PVS400-NDH MCCB FOR USE ABOVE 250V DC

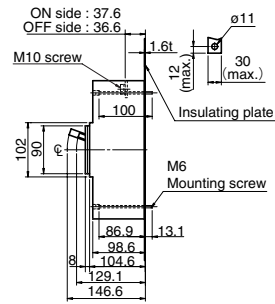
Outline Dimensions PVS400-NDH (4P)

ASL: Arrangement Standard Line HL: Handle Frame Centre Line Front connected

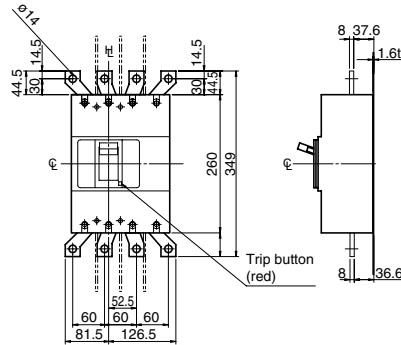
Front-connected



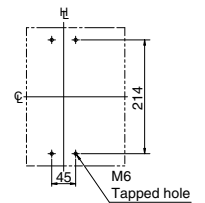
Preparation of conductor



With extension bars (optional)

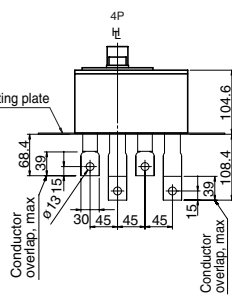
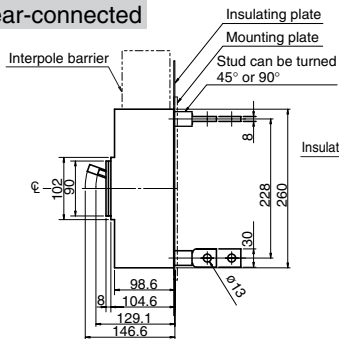


Drilling plan (front view)

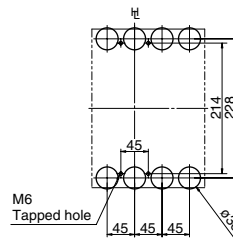


Note: See section 4 for the installation of the insulating plate.

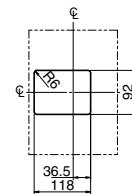
Rear-connected



Drilling plan (front view)



Panel cutout (front view)



Note: Studs are factory installed in horizontal direction both on the line and load sides. See section 4 for the installation of the insulating plate.

Panel cutout dimensions shown give an allowance of 1.0mm around the handle escutcheon.

DATA SHEET: TEMBREAK 2 PVS400-NDH MCCB FOR USE ABOVE 250V DC

Time/Current Characteristic Curves

PVS400-NDH 3P

