

## DATA SHEET: TEMBREAK 2 VS125-NJ MCCB

MCCB Electrical Characteristics to IEC 60947-2, EN 60947-2, JIS C 8201-2-1 ANN.1

Frame Reference	Quantity	Unit	Condition	TB2 S125	
Maximum In (A)				125	
Model				VS125	
Number of Poles				3	
Type				NJ	
Nominal current ratings					
	$I_n$	(A)	50°C	20,32	50,63,100 125
Electrical characteristics:					
Rated operational voltage	$U_e$	(V)	AC 50/60 Hz	1100	1100
Rated insulation voltage	$U_i$	(V)		1100	1100
Rated impulse voltage	$U_{imp}$	(kV)		8	8
Ultimate breaking capacity (IEC, JIS,AS/NZS)	$I_{cu}$	(kA)	1100V AC	4	6
Service breaking capacity (IEC, JIS,AS/NZS)	$I_{cs}$	(kA)	1100V AC	4	4
Protection					
Adjustable thermal, adjustable magnetic Utilisation Category				■ A	■ A
Installation					
Front Connection (FC)				■	■
Extension Bar (FB)				•	•
Cable Clamp (FW)				•	•
Rear Connection (RC)				•	•
Plug-in (PM)				•	•
Din Rail Mounting (DA)				-	-
Dimensions:	height	(mm)		155	155
	width	(mm)	3 pole	90	90
	depth	(mm)		68	68
Weight	weight	(kg)	3 pole	1.1	1.1
Operation :					
Direct Opening Action				■	■
Toggle operation				■	■
Door mounted (HS)/ Breaker mounted handle (HB)				•	•
Motor operation				•	•
Endurance	Electrical Mechanical	cycles cycles	1100V AC	1,000 7,000	1,000 7,000

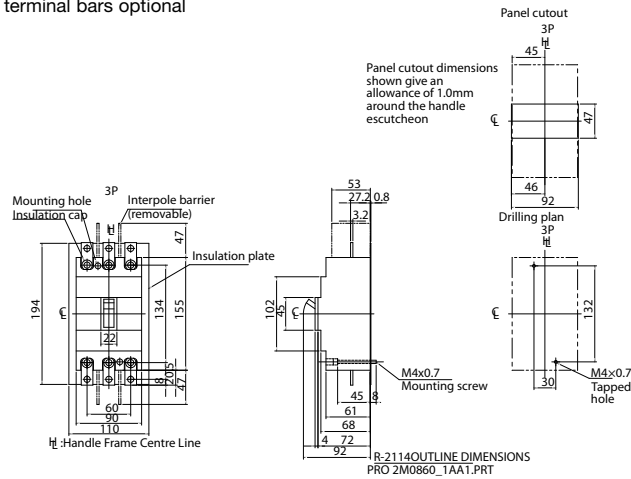
■ Standard    ● Optional    - Not Available

# DATA SHEET: TEMBREAK 2 VS125-NJ MCCB

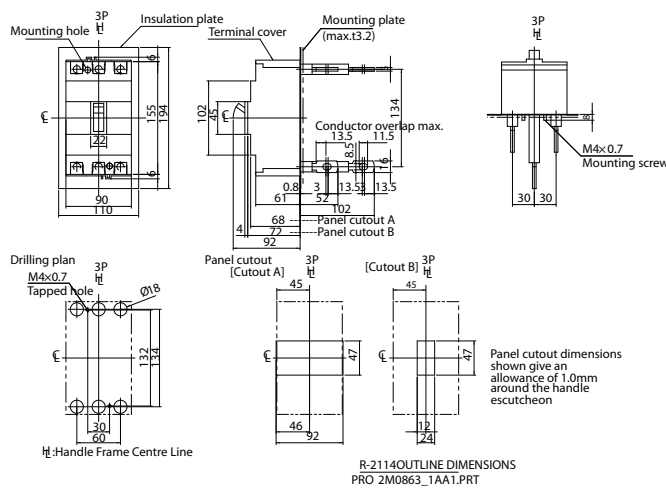
## Outline Dimensions VS125-NJ

ASL: Arrangement Standard Line H: Handle Frame Centre Line

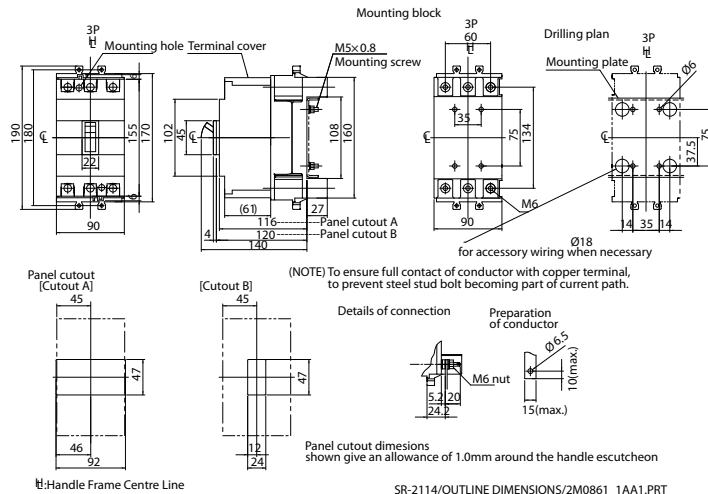
Front connected with terminal bars optional



Rear connected



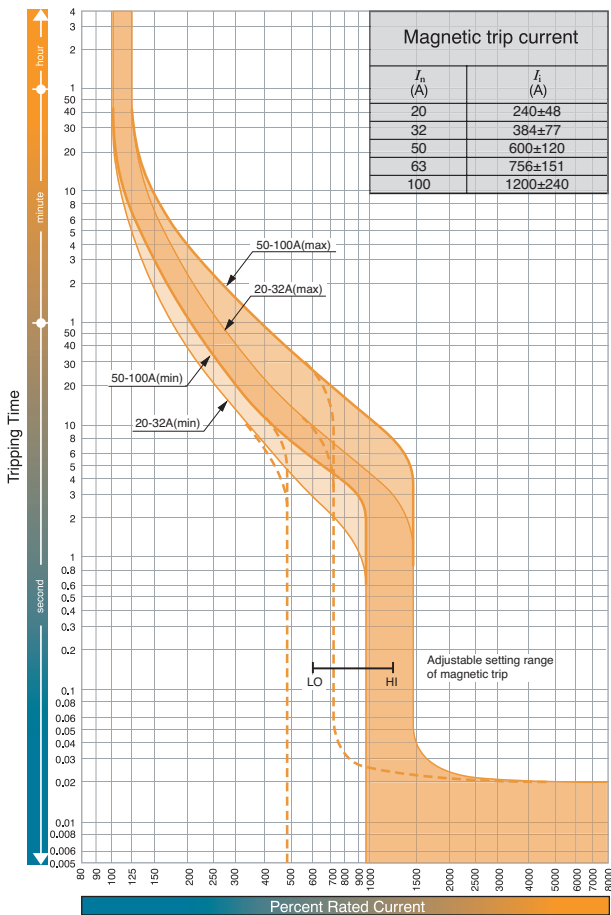
Plug in (PMB)



## DATA SHEET: TEMBREAK 2 VS125-NJ MCCB

### Time/Current Characteristic Curves

VS125-NJ (20A to 100A)



### Time/Current Characteristic Curves

VS125-NJ (125A)

