

DATA SHEET: TEMBREAK 2 S250-SN MCCB

Switch Disconnector Characteristics to IEC 60947-3 EN 60947-3, AS/NZS 3947-3,

Frame reference	Quantity	Unit	Condition	TB2 Lite 250
Max In (A) of Frame				250
Model				S250
Number of Poles				3, 4
Type				SN
Nominal current ratings				
	I_e	(A)		250
Electrical characteristics				
Rated operational voltage	U_e	(V)	AC 50/60 Hz DC	690 250
Rated insulation voltage	U_i	(V)		800
Rated impulse withstand voltage	U_{imp}	(kV)		8
Rated short-circuit making capacity	I_{cm}	(kA peak)		6
Rated short-time withstand current	I_{cw}	(kA rms)	0.3 Seconds	3
Utilisation category to IEC 60947-3			AC DC	AC-23A DC-22A
Installation				
Front connection (FC)				■
Extension bar (FB)				•
Cable clamp (FW)				•
Rear connection (RC)				•
Plug-in (PM)				-
Draw-out (DR)				-
DIN rail mounting (DA)				-
Dimensions	height	(mm)		165
	width	(mm)	3 pole 4 pole	105 140
	depth	(mm)		68
Weight	weight	(kg)	3 pole 4 pole	1.5 1.9
Operation				
Direct Opening Action				■
Toggle operation				■
Door mounted (HS) / Breaker mounted handle (HB)				•
Motor operation (MC)				•
Endurance	Electrical Mechanical	cycles cycles	415V AC	6000 18000

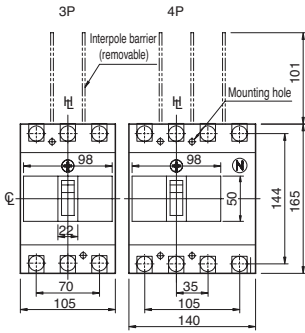
■ Standard • Optional - Not Available

DATA SHEET: TEMBREAK 2 S250-SN MCCB

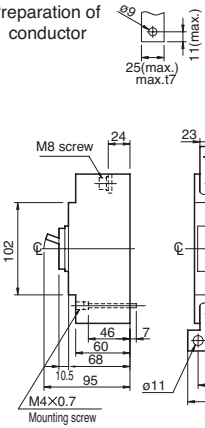
Outline Dimensions: S250-SN

ASL: Arrangement Standard Line h_t : Handle Frame Centre Line C : Handle Centre Line

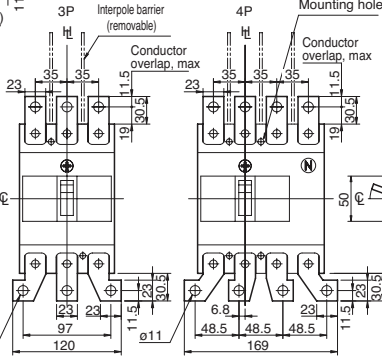
Front connected



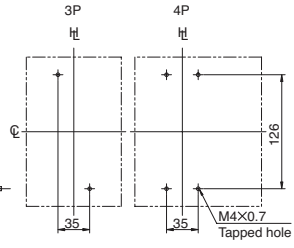
Preparation of conductor



With extension bars (optional)



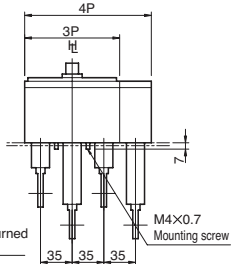
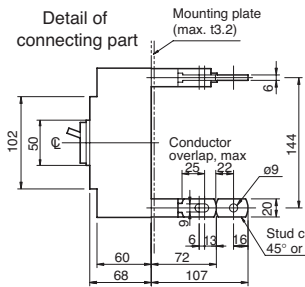
Drilling plan (front view)



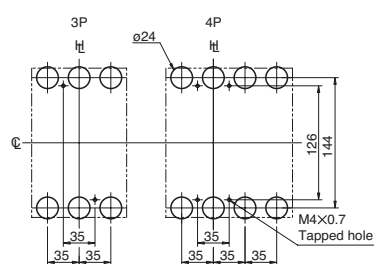
Note: For the extension bars, Straight bars or Spread bars can be supplied.

Rear connected

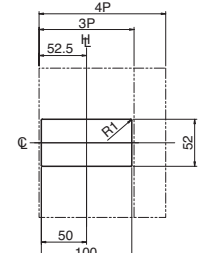
Detail of connecting part



Drilling plan (front view)



Panel cutout (front view)



Panel cutout dimensions shown give an allowance of 1.0mm around the handle escutcheon.