

DATA SHEET: TEMBREAK 2 S250-SD MCCB FOR USE ABOVE 250V DC

MCCB Electrical Characteristics to IEC 60947-2, EN 60947-2, JIS C 8201-2-1 ANN.1

Frame reference	Quantity	Unit	Condition	TB2 Lite 250
Max In (A) of Frame				250
Model				S250
Number of Poles				3
Type				SD
Nominal current ratings				
	I_n	(A)	50°C	100, 125, 160, 200 250
Electrical characteristics				
Rated insulation voltage	U_i	(V)	AC 50/60 Hz	800
Rated impulse voltage	U_{imp}	(kV)		8
Ultimate breaking capacity (IEC, JIS)	I_{cu}	(kA)	1000V DC ^{①②}	-
			750V DC ^{①②}	-
			600V DC ^{①②}	5
			500V DC ^{①②}	7.5
			350V DC ^{①②}	10
Service breaking capacity (IEC, JIS)	I_{cs}	(kA)	1000V DC ^{①②}	-
			750V DC ^{①②}	-
			600V DC ^{①②}	5
			500V DC ^{①②}	7.5
			350V DC ^{①②}	10
Protection				
Adjustable thermal, fixed magnetic Magnetic trip only (adjustable)				■
Installation				
Front connection (FC) Extension bar (FB) Rear connection (RC) Plug-in (PM) DIN rail mounting (DA) Dimensions	height width	(mm) (mm)	3 pole 4 pole	■ • • - - 165+55 ^③ 105
Weight	depth weight	(mm) (kg)	3 pole 4 pole	- 68 1.5 -
Operation				
Direct Opening Action Toggle operation Breaker mounted (HB) Door mounted (HS) Motor operation				■ ■ • • •
Endurance	Electrical	cycles	1000V DC 750V DC	- -
	Mechanical	cycles	350 - 600V DC -	1,000 7,000

■ Standard • Optional - Not Available

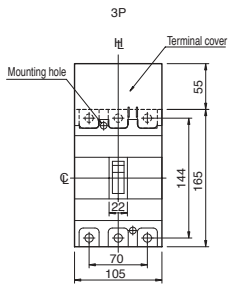
- ① Connect all poles in series when over DC250V
 ② The time constant (L/R) of the circuit should be less than 2.0ms nearby rated current less than 5ms for short circuit < 10kA less than 10ms for short circuit < 20kA less than 15ms for short circuit > 20kA
 ③ Includes the dimensions of the terminal cover (Mandatory)

DATA SHEET: TEMBREAK 2 S250-SD MCCB FOR USE ABOVE 250V DC

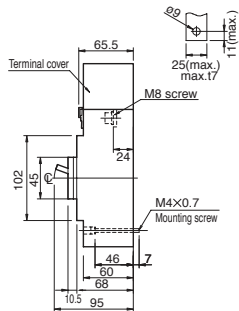
ASL: Arrangement Standard Line Ht: Handle Frame Centre Line

Outline Dimensions S250-SD

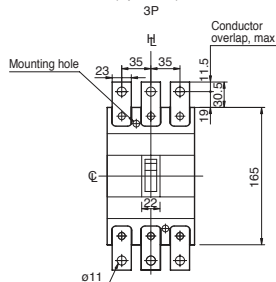
Front connected



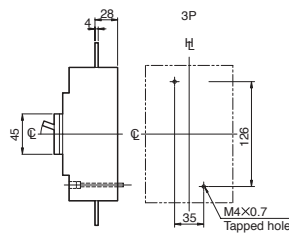
Preparation of conductor



With extension bars * (optional)

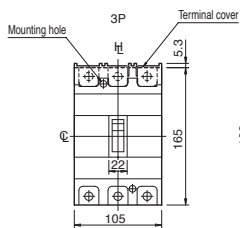


Drilling plan (front view)

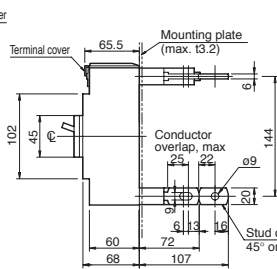


* Straight bars only.
For line side, use with the terminal cover.

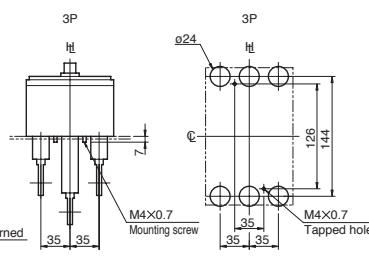
Rear connected



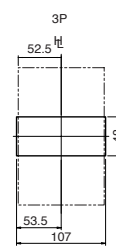
Detail of connecting part



Drilling plan (front view)



Panel cutout (front view)

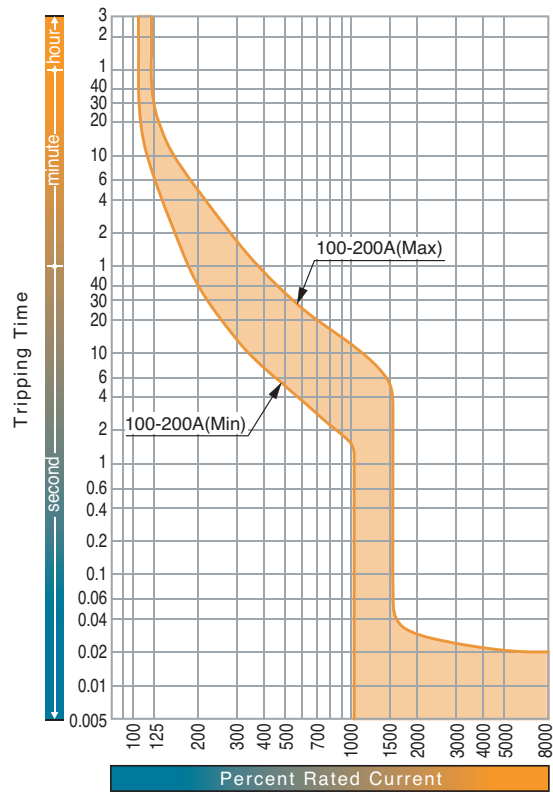


Panel cutout dimensions shown give an allowance of 1.0mm around the handle escutcheon.

DATA SHEET: TEMBREAK 2 S250-SD MCCB FOR USE ABOVE 250V DC

Time/Current Characteristic Curves

S250-SD, (100-200A)



Time/Current Characteristic Curves

S250-SD, (250A)

